

LifeFitness

LIFEFITNESS FACILITY DESIGN

DIRECTORATE OF SPORTS

BHOPAL 3D VIEWS

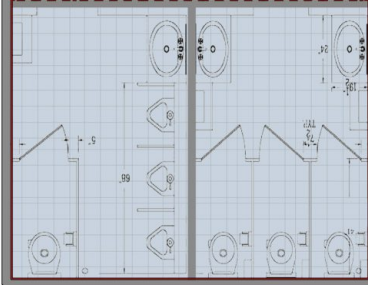
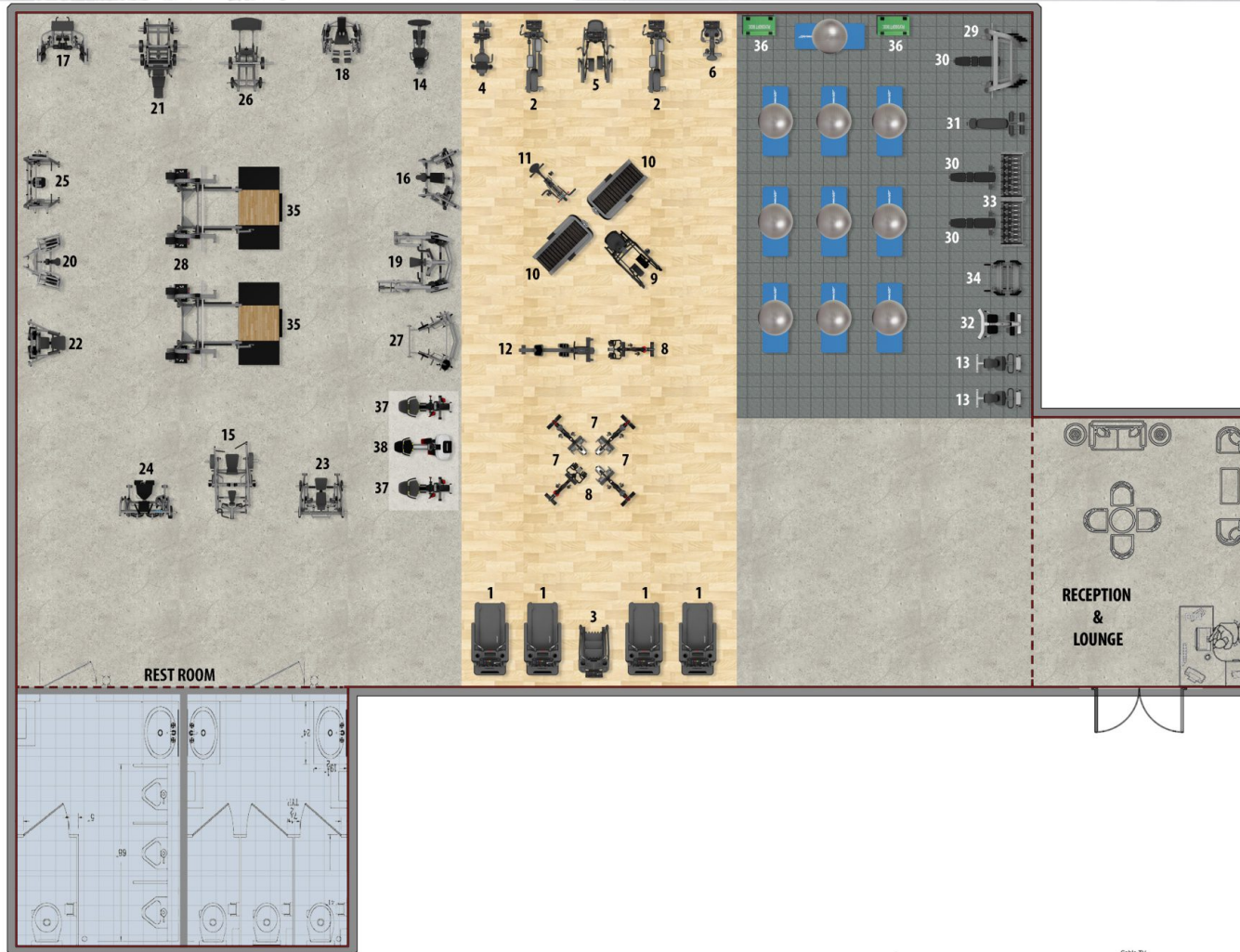
**HAMMER
STRENGTH®**

SCYBEX®

**INDOOR CYCLING
GROUP**

SCIFIT

BRUNSWICK
EST. 1890
TRADE MARK
100% AMERICAN



"ECORE" FLOORING DETAILS



**BOUNCE 2
WHEAT.**

ELECTRICAL REQUIREMENTS

- 15 AMPS (POWER POINT 6" ABOVE FROM GROUND)
- STB (5 AMPS POWER SOCKET)
- 3KVA ONLINE UPS / STABILIZER



PRODUCT LIST

CARDIO :

1. INTEGRITY DSL TREADMILL - 4 NOS
2. INTEGRITY DSL CROSS-TRAINER - 2 NOS
3. LF SL POWERMILL CLIMBER - 1 NOS
4. INTEGRITY DSL REC. BIKE - 1 NOS
5. TOTAL BODY SL ARC TRAINER - 1 NOS
6. INTEGRITY DSL UPRIGHT BIKE - 1 NOS
7. GROUP EXERCISE BIKE IC7 - 3 NOS
8. IC8 POWER TRAINER - 2 NOS
9. HS HD PERFORMANCE SPARC TRAINER - 1 NOS
10. HS HD PERFORMANCE TREADMILL - 2 NOS
11. HS HD PERFORMANCE AIR BIKE - 1 NOS
12. HEAT PERFORMANCE ROWER - 1 NOS

STRENGTH :

13. AXIOM FLEXIBILITY TRAINER - OP-FS - 2 NOS
14. AXIOM DUAL HIP ABD./ADD. - 1 NOS
15. HS PL ISO-LATERAL CHEST BACK IL-CB - 1 NOS
16. HS MTS CHEST PRESS MTS CP - 1 NOS
17. HS MTS KNEELING LEG CURL MTS KC - 1 NOS
18. HS MTS LEG EXTENSION MTS LE - 1 NOS
19. HS MTS FRONT PULLDOWN MTS FP - 1 NOS
20. HS MTS ROW MTS RW - 1 NOS
21. HS PL LINEAR LEG PRESS HS LLP - 1 NOS
22. HS PL LATERAL RAISE PL-LR - 1 NOS
23. HS PL PULLOVER PL-PO - 1 NOS
24. HS PL AB. / OBLIQUE CRUNCH PLAB - 1 NOS
25. HS PL 4-WAY NECK PL-4W - 1 NOS
26. HS PL LINEAR HACK SQUAT - 1 NOS
27. HS GROUND BASE JAMMER GB-J - 1 NOS

BENCHES AND RACKS :

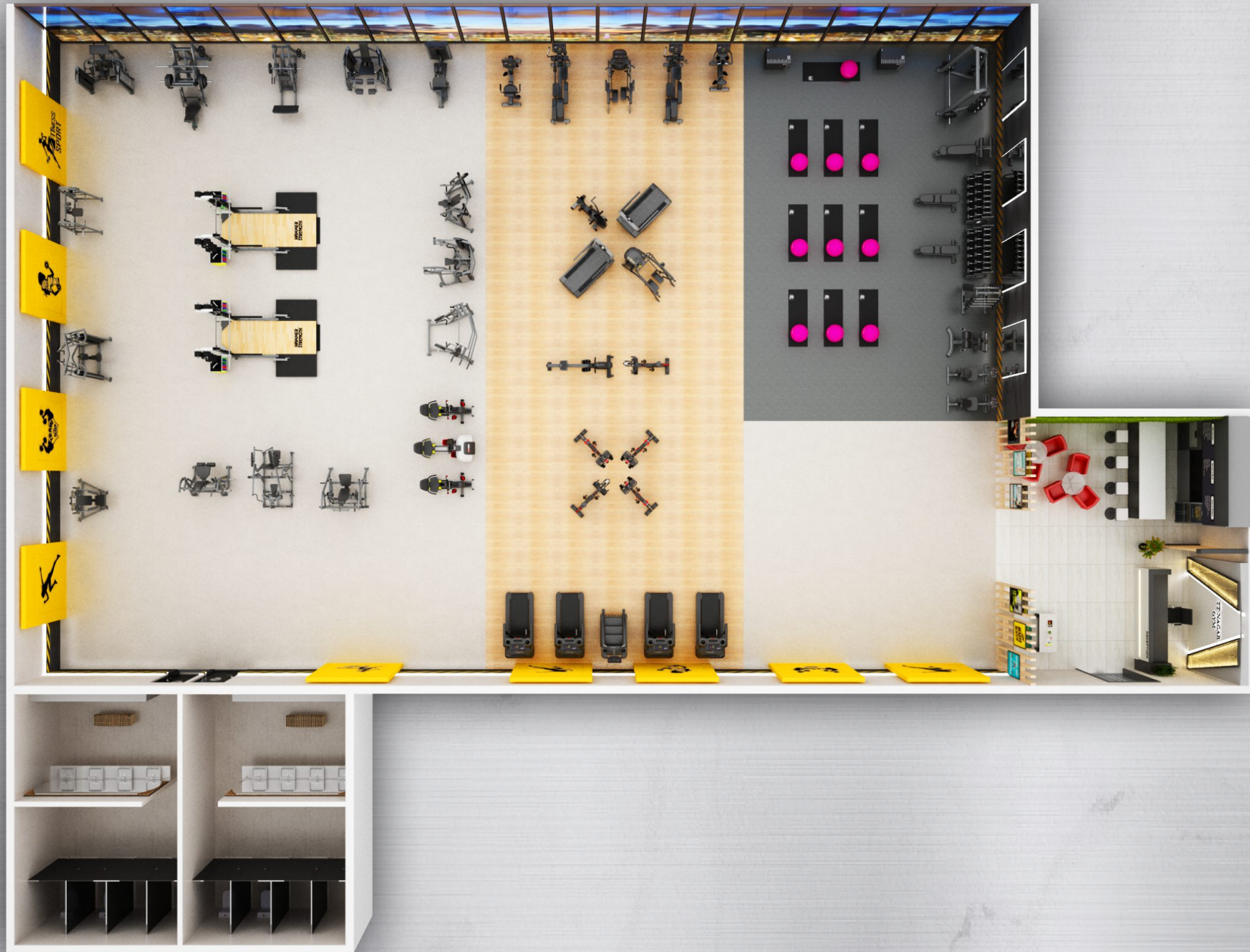
28. HD ELITE - HALF RACK - 2 NOS
29. SIGN. SMITH MACHINE SSM - 1 NOS
30. SIGN. MULTI-ADJ. BENCH SMAB - 3 NOS
31. SIGN. ADJ. AB. BENCH SADB - 1 NOS
32. SIGN. BACK EXT. SBE - 1 NOS
33. AXIOM 3 TIER DB RACK - 2 NOS
34. BARBELL STAND SB BR WITH BARBELLS - 1 NOS

ACCESSORIES :

35. HD ELITE PLATFORMS / INSERTS - 2 NOS
 36. HAMMER PLYO BOX - 2 NOS
- SCIFIT :**
37. SCIFIT PRO 2 SPORT UPPERBODY - 02 NO
 38. SCIFIT LATITUDE - 01 NO

GYM TOTAL SQ FT - 6370 | SALES CONTACT : AMEET MALLA | CONTACT : +91 95605 22448 | DATE : 13 - 04 - 2022 | GV/LF/QTE/22/175











































2D LAYOUT



3D LAYOUT



WALKTHROUGH



VIRTUAL REALITY (VR)

OUR BRANCHES



GYMPAC VENTURES PRIVATE LIMITED - No: 1/580, Vinayaga Nagar 1st Street, Thoraipakkam, Chennai - 600097

Email : sales@lifefitnessindia.com | Phone : 99402 26789