

LifeFitness

LIFEFITNESS FACILITY DESIGN

BAALE RESORT

3D VIEWS

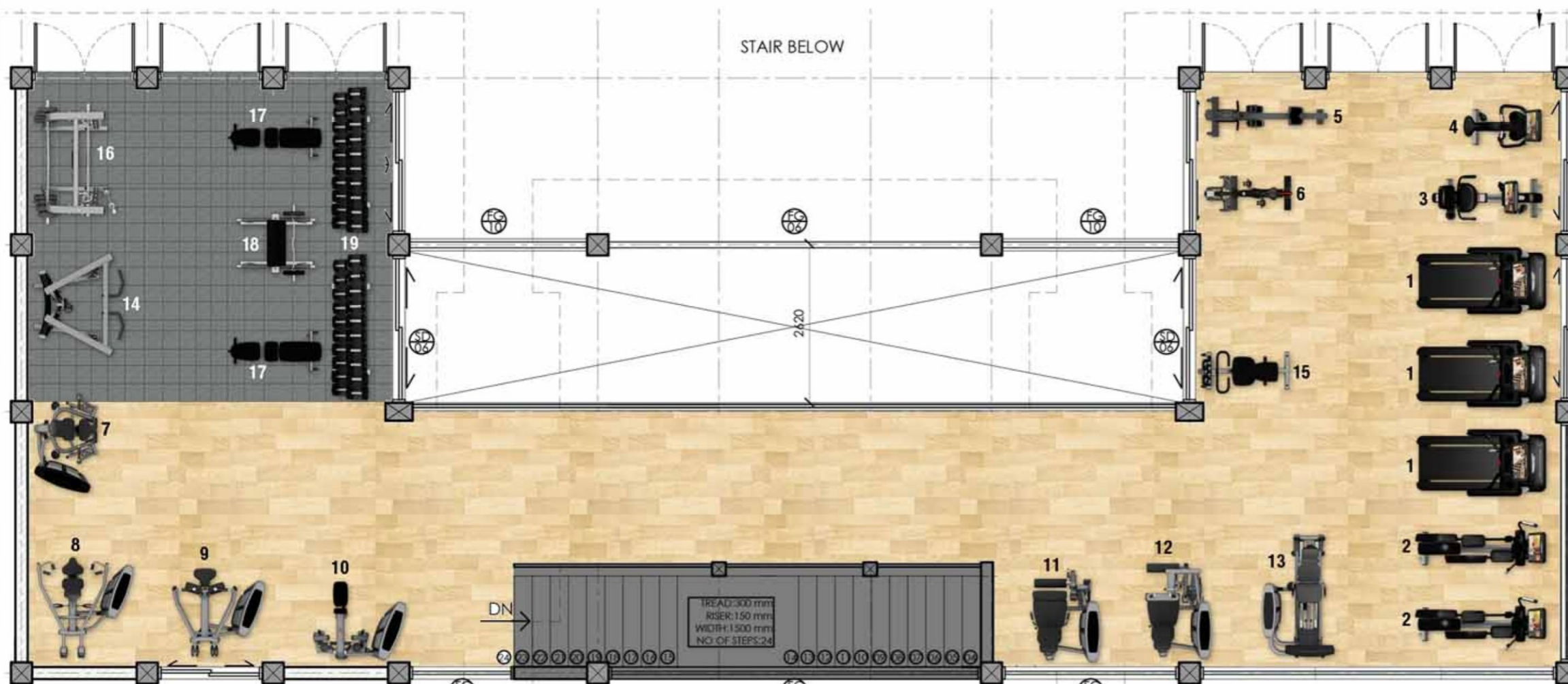
**HAMMER
STRENGTH®**

SCYBEX®

**INDOOR CYCLING
GROUP**

SCIFIT

BRUNSWICK
AUTHENTIC
EST. 1845
AMERICAN



PRODUCT LIST -

CARDIO :

1. LIFE FITNESS DSE3-HD TREADMILL - 3 NOS
2. LIFE FITNESS SSE3-HD CROSS TRAINER - 2 NOS
3. LIFE FITNESS SSE3-HD RECUMBENT BIKE - 1 NOS
4. LIFE FITNESS SSE3-HD UPRIGHT BIKE - 1 NOS
5. HEAT PERFORMANCE ROWER - 1 NOS
6. GROUP EXERCISE BIKE IC7 - 1 NOS

STRENGTH :

7. INSIGNIA CHEST PRESS SS-CP - 1 NOS
8. INSIGNIA SHOULDER PRESS SS-SP - 1 NOS
9. INSIGNIA PULLDOWN SS-PD - 1 NOS
10. INSIGNIA ROW/REAR DELTOID SS-RW - 1 NOS
11. INSIGNIA LEG EXT. SS-LE - 1 NOS
12. INSIGNIA SEATED LEG CURL SS-SLC - 1 NOS
13. INSIGNIA SEATED LEG PRESS SS-SLP - 1 NOS
14. AXIOM DUAL ADJ. PULLEY OP-DAP - 1 NOS
15. AXIOM FLEXIBILITY TRAINER - OP-FS - 1 NOS

BENCHES & RACKS :

16. AXIOM SMITH RACK - OP-SM - 1 NOS
17. AXIOM ADJ. BENCH OP-ADJ - 2 NOS
18. SIGNATURE ARM CURL BENCH SAC - 1 NOS
19. SIGNATURE 2 TIER DUMBBELL RACK SDR2 - 2 NOS

ELECTRICAL REQUIREMENTS

 15 AMPS (POWER POINT 6" ABOVE FROM GROUND)

 STB (5 AMPS POWER SOCKET)

 3KVA ONLINE UPS / STABILIZER



"ECORE" FLOORING DETAILS



**BOUNCE 2
WHEAT.**

TOTAL GYM AREA SQ. FT - 1240

CONTACT : SHOMEET MAKWANA | PHONE : 77386 29997 | DATE : 30 - 03 - 21 | GV/LF/QTE/20/4385

















OUR BRANCHES



2D LAYOUT



3D LAYOUT



WALKTHROUGH



VIRTUAL REALITY (VR)



LifeFitness

**HAMMER
STRENGTH®**

SCYBEX®

**INDOOR CYCLING
GROUP**

SCIFIT™

**BRUNSWICK
AMERICAN**

GYMPAC VENTURES PRIVATE LIMITED - No: 1/580, Vinayaga Nagar 1st Street, Thoraipakkam, Chennai - 600097

Email : sales@lifefitnessindia.com | Phone : 99402 26789